



# MADE WITH LOVE™

THE COTTONY ONE™



---

## HAT, GLOVE AND COWL SET

PATTERN No. M23071  
KNIT • EASY





# THE COTTONY ONE HAT, GLOVE AND COWL SET

PATTERN No. M23071  
KNIT • EASY



## SIZE

### Hat

#### Finished Circumference

About 19 1/2 in. (49.5 cm)

**Finished Length** About 7 1/2 in. (19 cm)

### Gloves

#### Finished Hand Circumference

About 8 in. (20.5 cm)

**Finished Length** About 8 in. (20.5 cm)

### Cowl

**Finished Circumference** About 30 in. (76 cm)

**Finished Length** About 10 in. (25.5 cm)

## MATERIALS

- LION BRAND® THE COTTONY ONE (Art. #3040)
  - #105 Over the Moon 2 balls (A)
  - #150 Silver Medal 1 ball (B)
- LION BRAND® stitch markers
- LION BRAND® stitch holders
- LION BRAND® large-eyed blunt needle

## ADDITIONAL MATERIALS

Knitting needles size 7 (4.5 mm)  
Pom-pom maker

## GAUGE

16 sts + 24 rows = about 4 in. (10 cm) over St st (k on RS, p on WS).

BE SURE TO CHECK YOUR GAUGE.

## STITCH EXPLANATION

**M1 (make 1)** An increase worked by lifting the horizontal strand lying between needles and placing it onto the left needle. Knit this new stitch through the back loop – 1 st increased.

## PATTERN STITCH

K2, p2 Rib (worked over a multiple of 4 sts + 2 additional sts)

**Row 1:** K2, \*p2, k2; rep from \* to end of row.

**Row 2:** K the knit sts and p the purl sts.

Rep Row 2 for K2, p2 Rib.

## NOTES

1. All pieces are worked back and forth in rows and then seamed.
2. Yarn color is changed following Charts to form heart patterns. Read RS rows of Charts from right to left and WS rows from left to right.

3. Heart patterns are worked in intarsia on Hat and Gloves. When working intarsia, do not carry yarn across WS of work between color changes, use a separate ball of yarn for each section of color. When changing color, twist yarns on WS to prevent holes.

4. Wind B color yarn into separate, smaller balls before beginning.

5. Heart pattern is worked in stranded colorwork on Cowl. When working in stranded colorwork, carry color not in use along WS of piece.

6. Right and Left Gloves are worked as mirror images of each other.

## HAT

### Ribbing

With B, cast on 82 sts.

Work in K2, p2 Rib for 27 rows.

Cut B.

### Body

With A, beg with a RS (knit) row, work in St st for 4 rows.

### Begin Charted Heart Pattern

**Row 1 (RS):** With A, k31, place marker (pm), k20 AND change yarn color following Row 1 of Hat Chart, pm; with A, k31.

Continue in St st (k on RS, p on WS) AND change yarn color following Hat Chart until all 23 rows of Chart have been completed.

Cut B.

Work remainder of Hat with A only.

Work in St st for 9 rows.

### Shape Top of Hat

**Row 1 (RS):** K1, \* k2, k2tog; rep from \* to last st, k1 – you will have 62 sts in this row.

**Row 2 and all WS rows:** Purl.

**Row 3:** \* K1, k2tog; rep from \* to last 2 sts, k2 – 42 sts.

**Row 5:** \* K2tog; rep from \* across – 21 sts.

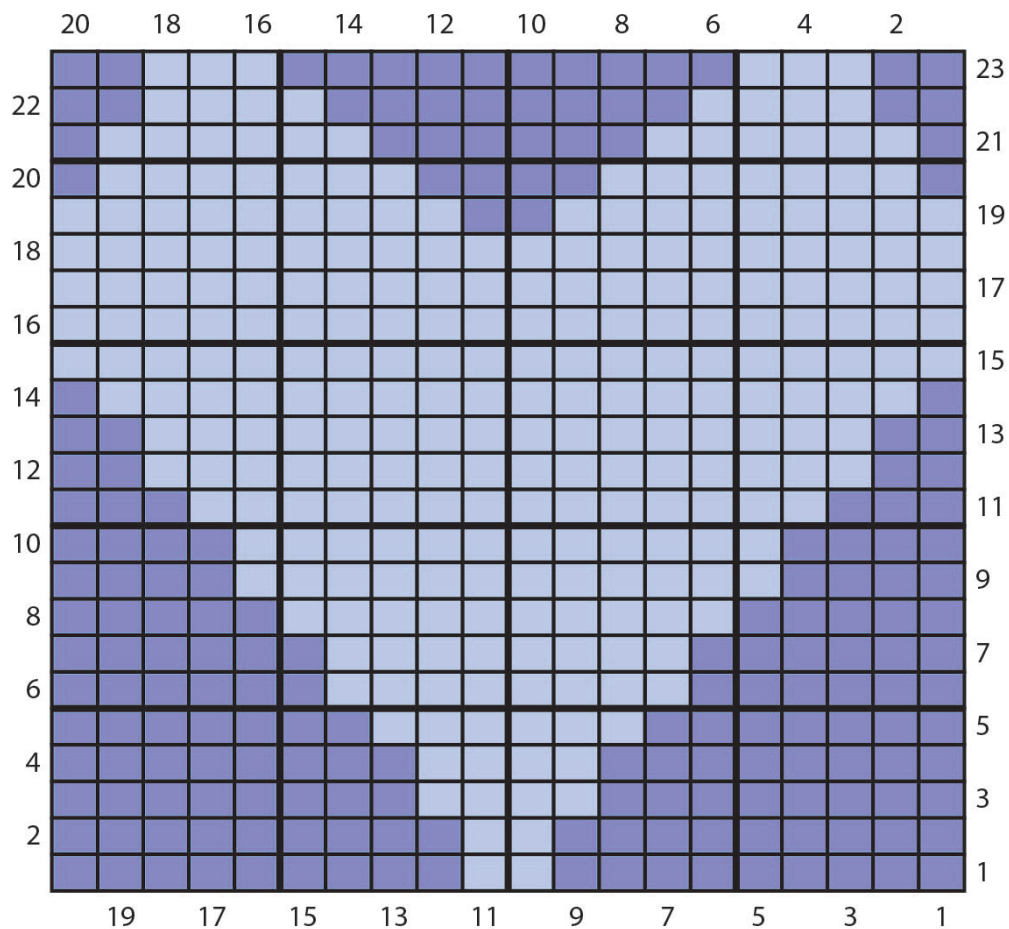
**Row 7:** \* K2tog; rep from \* to last st, k1 – 11 sts.

Bind off, leaving a long tail for sewing.

### Finishing Hat

Using yarn tails still attached, seam side edges. Thread ending yarn tail through sts at top of Hat and pull to close opening. Knot securely. Weave in ends.

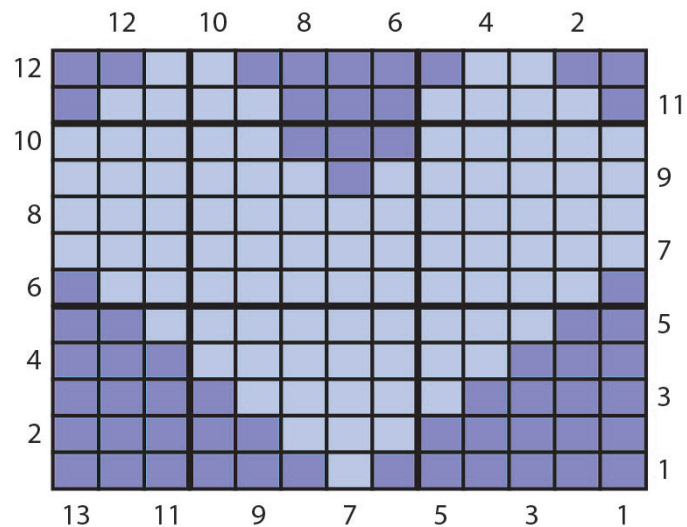
### HAT CHART



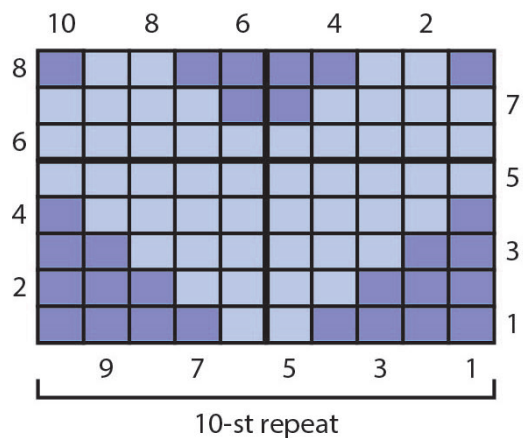
**COLOR KEY**

- #105 Over the Moon (A)
- #150 Silver Medal (B)

### GLOVE CHART



### COWL CHART



With A and B and following package instructions, make a large pom-pom. Tie pom-pom to top of Hat.

## RIGHT GLOVE

### Cuff Ribbing

With A, leaving a long yarn tail, cast on 34 sts.  
With A, work in K2, p2 Rib for 3 rows.

**Note:** Do not cut yarn until instructed. Carry yarn color not in use carefully up the side of piece.

With B, work in K2, p2 Rib for 4 rows.  
With A, work in K2, p2 Rib for 4 rows.  
With B, work in K2, p2 Rib for 4 rows.  
Change to A. Cut B.

**Increase Row (RS):** With A, k17, M1, k to end of row – you will have 35 sts in this row.  
Beg with a WS (purl) row, work in St st (k on RS, p on WS) for 7 rows.

### Shape Thumb Gusset

**Next row (RS):** K17, place marker (pm), M1, k1, M1, pm, k to end of row – 37 sts (3 sts between markers).

**Next row:** Purl.

### Begin Charted Heart Pattern

**Row 1 (RS):** With A, k2; k13 AND change yarn color following Row 1 of Glove Chart; with A, k to next marker, slip marker (sm), M1, k to next marker, M1, sm, k to end of row – 39 sts (5 sts between markers).  
Continue to slip markers as you come to them.  
**Row 2:** With A, p to last 15 sts, p13 AND change yarn color following next row of Glove Chart; with A, p2.  
**Row 3:** With A, k2; k13 AND change yarn color following next row of Glove Chart; with A, k to next marker, sm, M1, k to next marker, M1, sm, k to end of row – 41 sts (7 sts between markers).  
**Rows 4-9:** Rep Rows 2 and 3 for 3 more times – 47 sts (13 sts between markers).  
**Row 10:** With A, p to last 15 sts; p13 AND change yarn color following next row of Glove Chart; with A, p2.

### Form Thumb Opening

**Row 11:** With A, k2; k13 AND change yarn color following next row of Glove Chart; with A, k to next marker, remove marker, slip next 13 sts to

a holder, remove next marker, k to end of row – 34 sts.

**Row 12:** With A, p to last 15 sts, p13 AND change yarn color following next row of Glove Chart; with A, p2.  
Cut B.

Work remainder of piece with A only.  
Work in St st for 8 rows.  
Work in K2, p2 Rib for 4 rows.  
Bind off, leaving a long tail for sewing.

### Thumb

Slip 13 sts for thumb from holder back onto needle so that you are ready to work a RS (knit) row  
Work in St st for 8 rows.  
Bind off.

## LEFT GLOVE

Work same as Right Glove to Begin Charted Heart Pattern.

### Begin Charted Heart Pattern

**Row 1 (RS):** With A, k to first marker, slip marker (sm), M1, k to next marker, M1, sm, k to last 15 sts; k13 AND change yarn color following Row 1 of Glove Chart; with A, k2 – 39 sts (5 sts between markers).  
**Row 2:** With A, p2; p13 AND change yarn color following next row of Glove Chart; with A, p to end of row.  
**Row 3:** With A, k to next marker, sm, M1, k to next marker, M1, sm, k to last 15 sts; k13 AND change yarn color following next row of Glove Chart; with A, k2 – 41 sts (7 sts between markers).  
**Rows 4-9:** Rep Rows 2 and 3 for 3 more times – 47 sts (13 sts between markers).  
**Row 10:** With A, p2; p13 AND change yarn color following next row of Glove Chart; with A, p to end of row.

### Form Thumb Opening

**Row 11:** With A, k to next marker, remove, slip next 13 sts to a holder, remove marker; k to last 15 sts; k13 AND change yarn color following next row of Glove Chart; with A, k2 – 34 sts.  
**Row 12:** With A, p2; p13 AND change yarn color following next row of Glove Chart; with A, p to end of row.  
Cut B.  
Complete same as Right Glove.

## Finishing Gloves

Using yarn tails still attached to Gloves, seam side edges of Gloves and thumbs.  
Weave in ends.

## COWL

With A, cast on 122 sts.  
Work in K2, p2 Rib for 4 rows.

Beg with a WS (purl) row, work in St st for 21 rows.

### Begin Charted Heart Pattern

**Row 1 (RS):** With A, k1; k to last st AND change yarn color following Row 1 of Cowl Chart working the 10-st rep 12 times across row; with A, knit last st.  
**Rows 2-8:** With A, k1; k to last st AND change yarn color following next row of Cowl Chart working the 10-st rep 12 times across each row; with A, knit last st.  
Cut B.

With A, work in St st for 14 rows.  
With B, work in St st for 6 rows.  
With A, knit 1 row.

With A, work in K2, p2 Rib for 4 rows.  
Bind off, leaving a long tail for sewing.

## Finishing Cowl

Using yarn tails still attached to piece, seam side edges together.  
Weave in ends.

## ABBREVIATIONS

beg = begin(ning)  
k = knit  
k2tog = knit 2 stitches together  
p = purl  
rep = repeat  
RS = right side  
St st = Stockinette stitch  
st(s) = stitch(es)  
WS = wrong side

Every effort has been made to produce accurate and complete instructions. We cannot be responsible for variance of individual makers, human error, or typographical mistakes.

©2023 Lion Brand Yarn Company, all rights reserved.